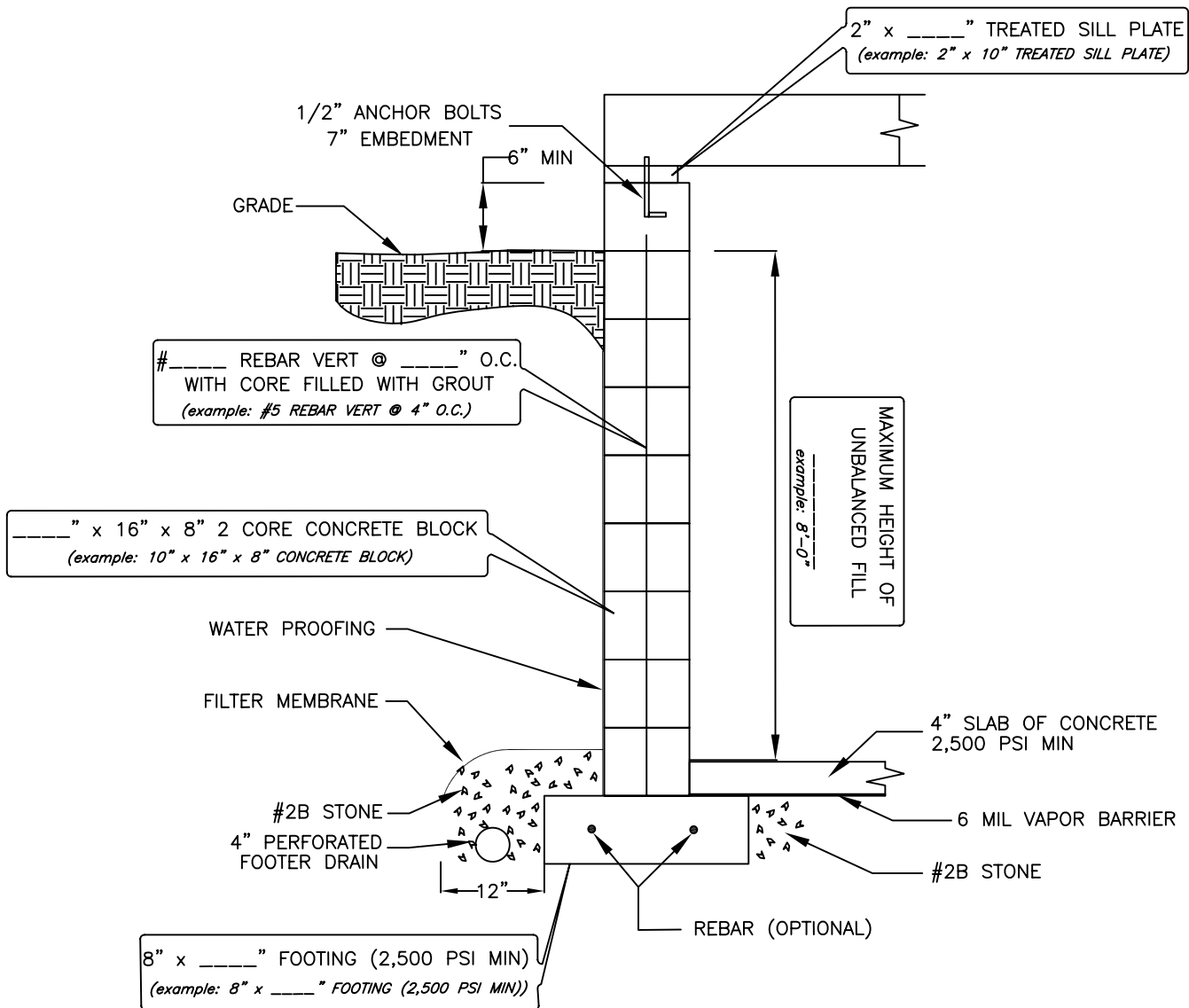


Residential Addition Documentation Requirements

These example pages illustrate acceptable submission documents for a residential addition.

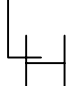
Certain values such as frost depths are not necessarily correct for your locale or building site. Check the design criteria chart for your local area.

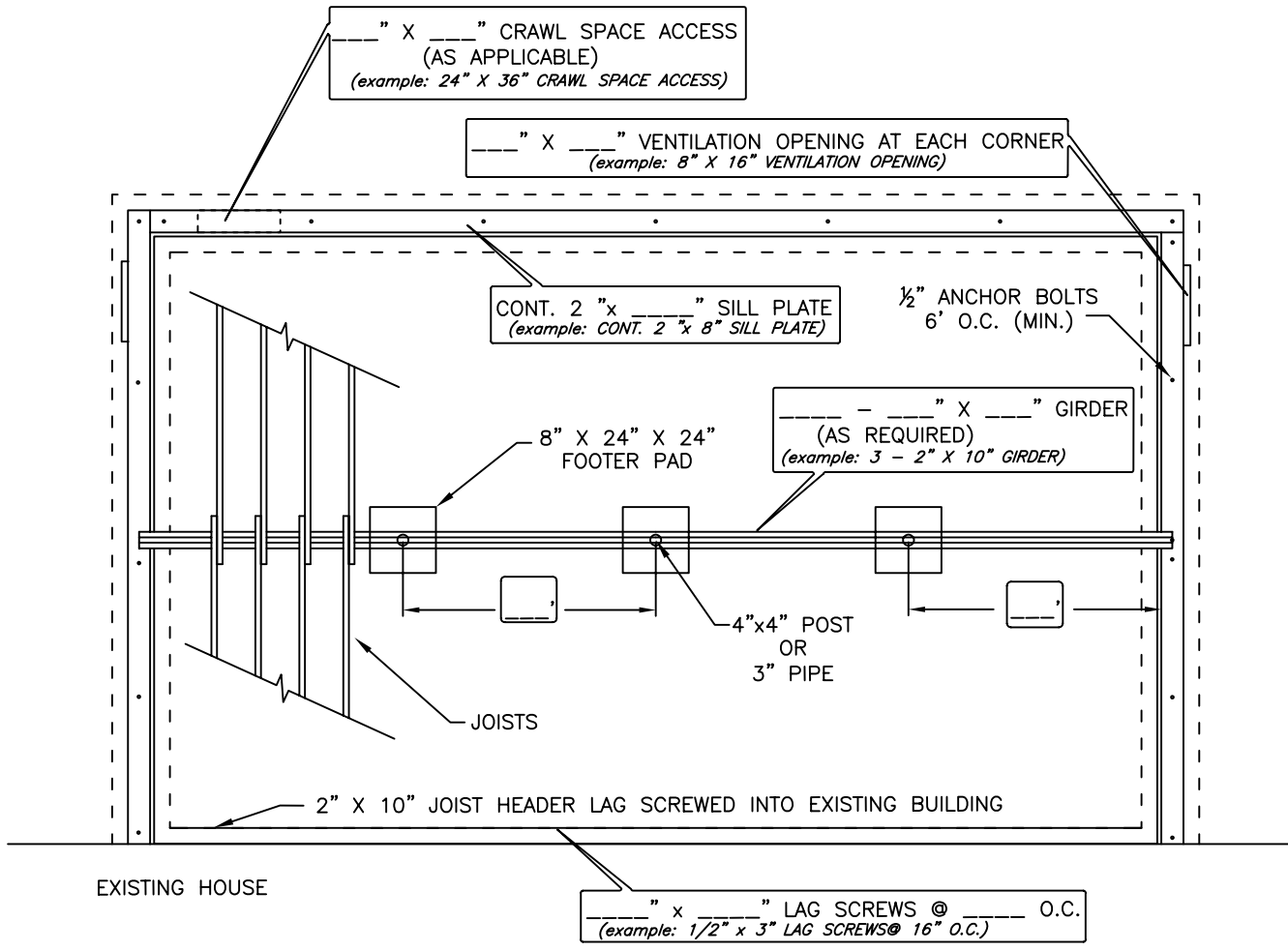
For two story additions a drawn plan must be submitted in place of the construction worksheet.



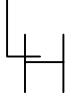
NOTES:

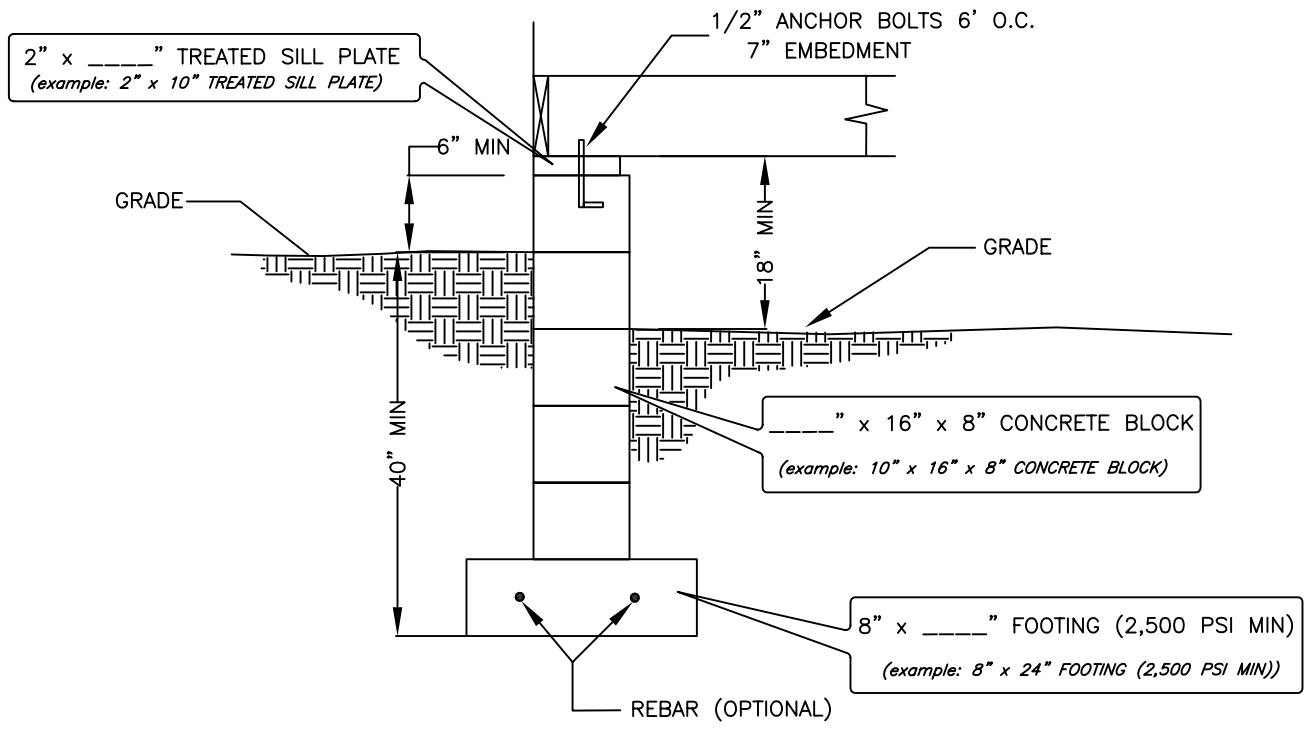
BOTTOM OF FOOTING MUST BE A MINIMUM OF 40" BELOW GRADE -
 STEPPED FOOTINGS WILL BE REQUIRED FOR WALK OUT BASEMENTS.

BASEMENT FOUNDATION DETAIL			
 LIGHT-HEIGEL & ASSOCIATES, INC. ENGINEERS AND SURVEYORS PO BOX 120 MONTANDON, PA 17850 (570) 524-7742			
DATE: 11/24/04	SCALE: 1"=20"	DRAWN BY: CKM	SHEET#: SK-4



NOTES:
 ANCHOR BOLTS TO BE PLACED WITHIN 12" OF ENDS AND SPLICES
 IN SILL PLATE.
 CRAWL SPACE VENTILATION AREA TO BE 1/150 OF FLOOR AREA
 NUMBER AND SPACING OF SUPPORT COLUMNS WILL VARY – CLEARLY INDICATE ON SUBMISSION
 IF ORIENTATION OF GIRDER AND JOISTS IS DIFFERENT FROM ABOVE, SUBMIT SEPARATE SKETCHES
 SHOWING EXISTING HOUSE, GIRDER WITH POST SPACING, AND JOIST DIRECTION

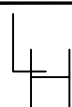
FOUNDATION PLAN AS SEEN FROM ABOVE			
 LIGHT-HEIGEL & ASSOCIATES, INC. ENGINEERS AND SURVEYORS PO BOX 120 MONTANDON, PA 17850 (570) 524-7742			
DATE: 11/24/04	SCALE: N.T.S.	DRAWN BY: CKM	SHEET#: SK-3



CHECK AS APPLICABLE:

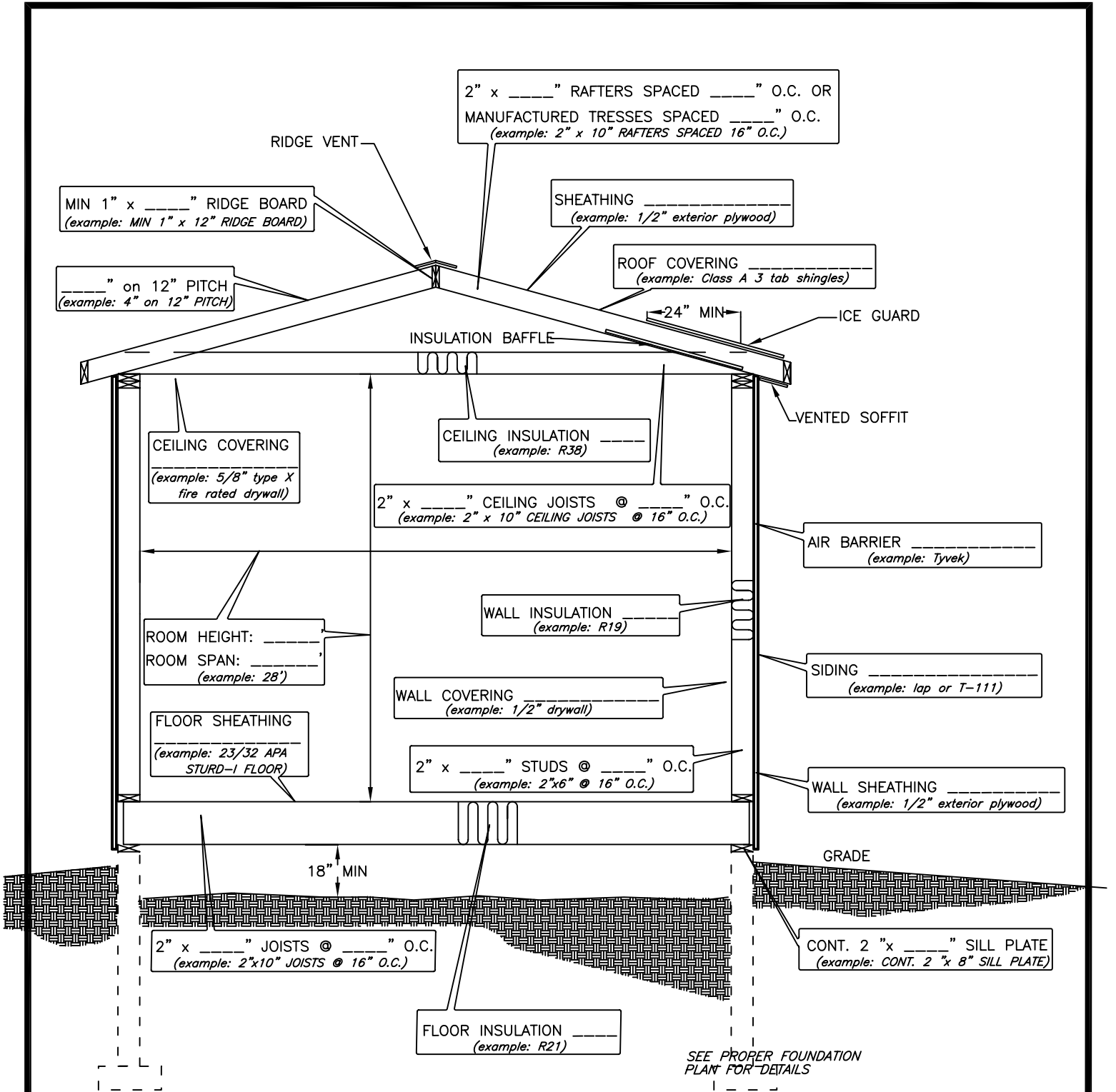
- 6 MIL VAPOR BARRIER
- 4" CONCRETE SLAB 2,500 PSI MIN
- 4" #2B STONE

CRAWLSPACE FOUNDATION DETAIL



LIGHT-HEIGEL & ASSOCIATES, INC.
ENGINEERS AND SURVEYORS
PO BOX 120
MONTANDON, PA 17850
(570) 524-7742

DATE: 11/24/04	SCALE: 1"=20"	DRAWN BY: CKM	SHEET#: SK-5
-------------------	------------------	------------------	-----------------

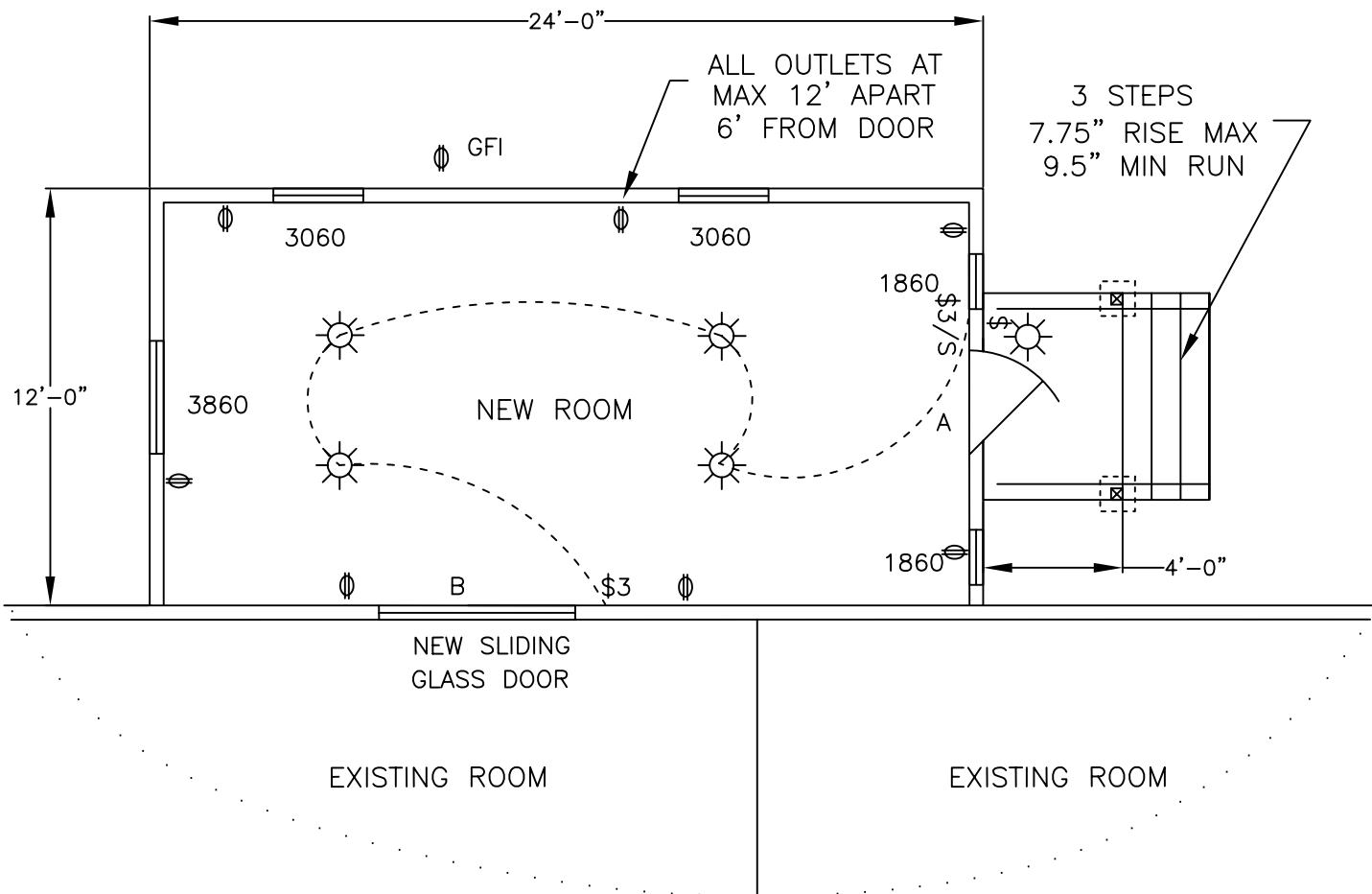


NOTES:

PRE-ENGINEERED ROOF TRUSSES MAY BE USED IN LIEU OF ROOF STRUCTURE SHOWN.
 PRE-ENGINEERED FLOOR SYSTEMS MAY BE USED AND SHOULD BE INSTALLED ACCORDING TO THE MANUFACTURERS INSTRUCTIONS.
 ATTIC VENTILATION AND ACCESS MAY BE REQUIRED.
 DIAGONAL WIND BRACING OR PLYWOOD SHEAR PANELS AT CORNERS AND EACH 25' OF WALL.

BUILDING SECTION DETAIL			
LIGHT-HEIGEL & ASSOCIATES, INC. ENGINEERS AND SURVEYORS PO BOX 120 MONTANDON, PA 17850 (570) 524-7742			
DATE: 11/24/04	SCALE: N.T.S.	DRAWN BY: CKM	SHEET#: SK-2

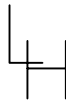
NOTES:
BOTTOM



DOOR AND WINDOW SCHEDULE EXAMPLE

WINDOW	NO.	ROUGH OPENING		EGRESS INFORMATION			HEADER SIZE		JACK STUDS	LIGHT SQ. FT.	VENT SQ. FT.
		WIDTH x HEIGHT	WIDTH x HEIGHT	SQ. FT.	U-VALUE	No. -THKxWxSPN					
DOUBLE-HUNG	3860	39" x 60.5"	34.3" x 24.73"	5.89	0.37	2 - 2"x8"x39"	1	10.60	5.89		
	3060	31" x 60.5"	26.3" x 24.73"	4.52	0.37	2 - 2"x8"x31"	1	7.92	4.52		
CASEMENT	1860	19" x 60.5"	9.76" x 56.38"	3.82	0.37	2 - 2"x8"x21"	1	4.97	3.82		
DOOR	A	39" x 81.5"	36" x 80"		0.38	2 - 2"x8"x39"	1	N/A	N/A		
	B	75" x 81.5"	36" x 78"		**	3 - 2"x10"x75"	1	N/A	N/A		

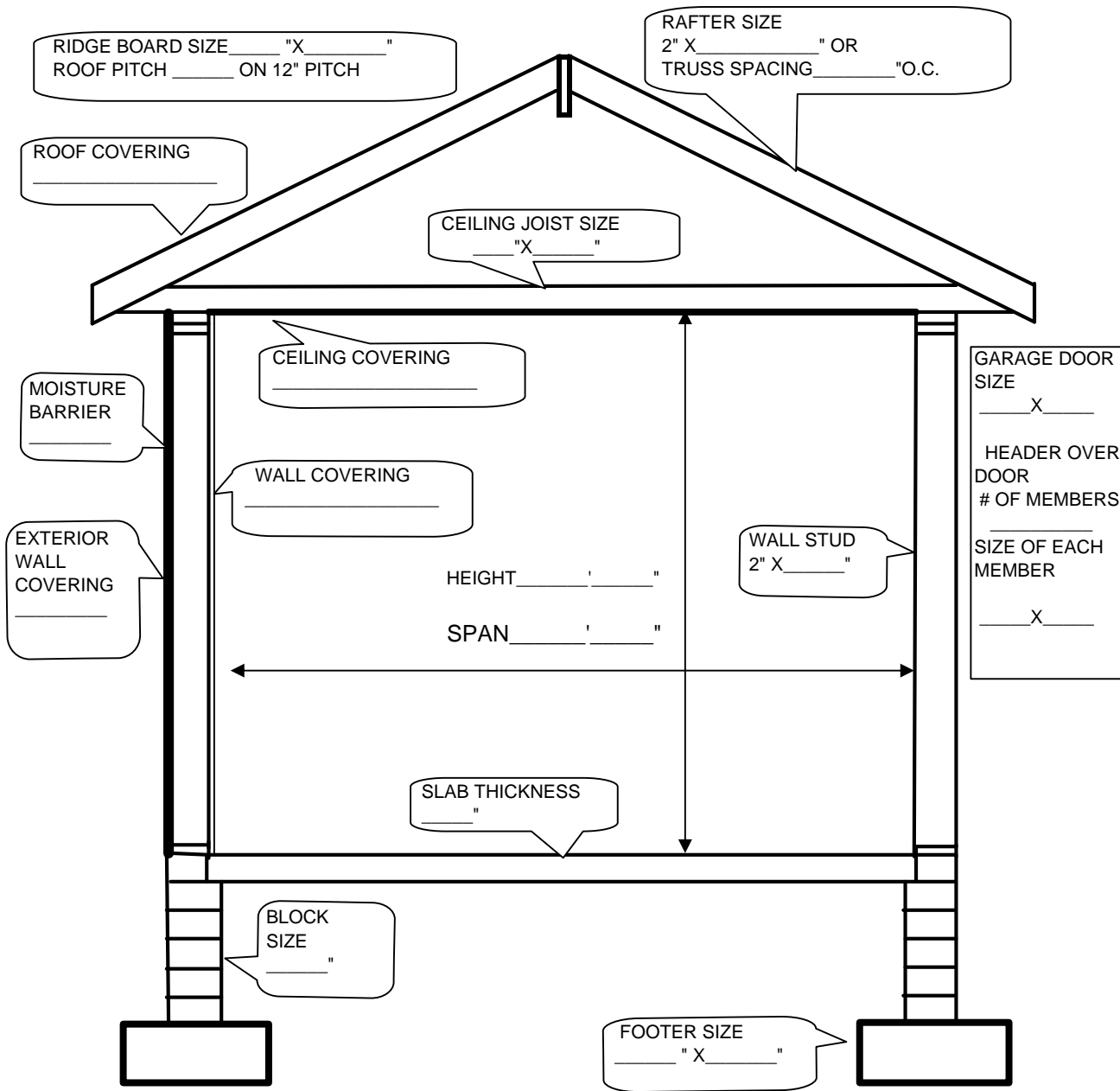
** NOT REQUIRED FOR INTERIOR DOOR

ADDITION LAYOUT			
 LIGHT-HEIGEL & ASSOCIATES, INC. ENGINEERS AND SURVEYORS PO BOX 120 MONTANDON, PA 17850 (570) 524-7742			
DATE:	SCALE:	DRAWN BY:	SHEET#:
12/21/04	AS SHOWN	CKM	SK-1

DOOR AND WINDOW SCHEDULE

WINDOW DOUBLE-HUNG	NO.	ROUGH OPENING			EGRESS INFORMATION			U-VALUE	HEADER SIZE	JACK STUDS	LIGHT SQ. FT.	VENT SQ. FT.	
		WIDTH	x	HEIGHT	WIDTH	x	HEIGHT	SQ. FT.	**				No.-THKxWxSPN
CASEMENT													
DOOR													

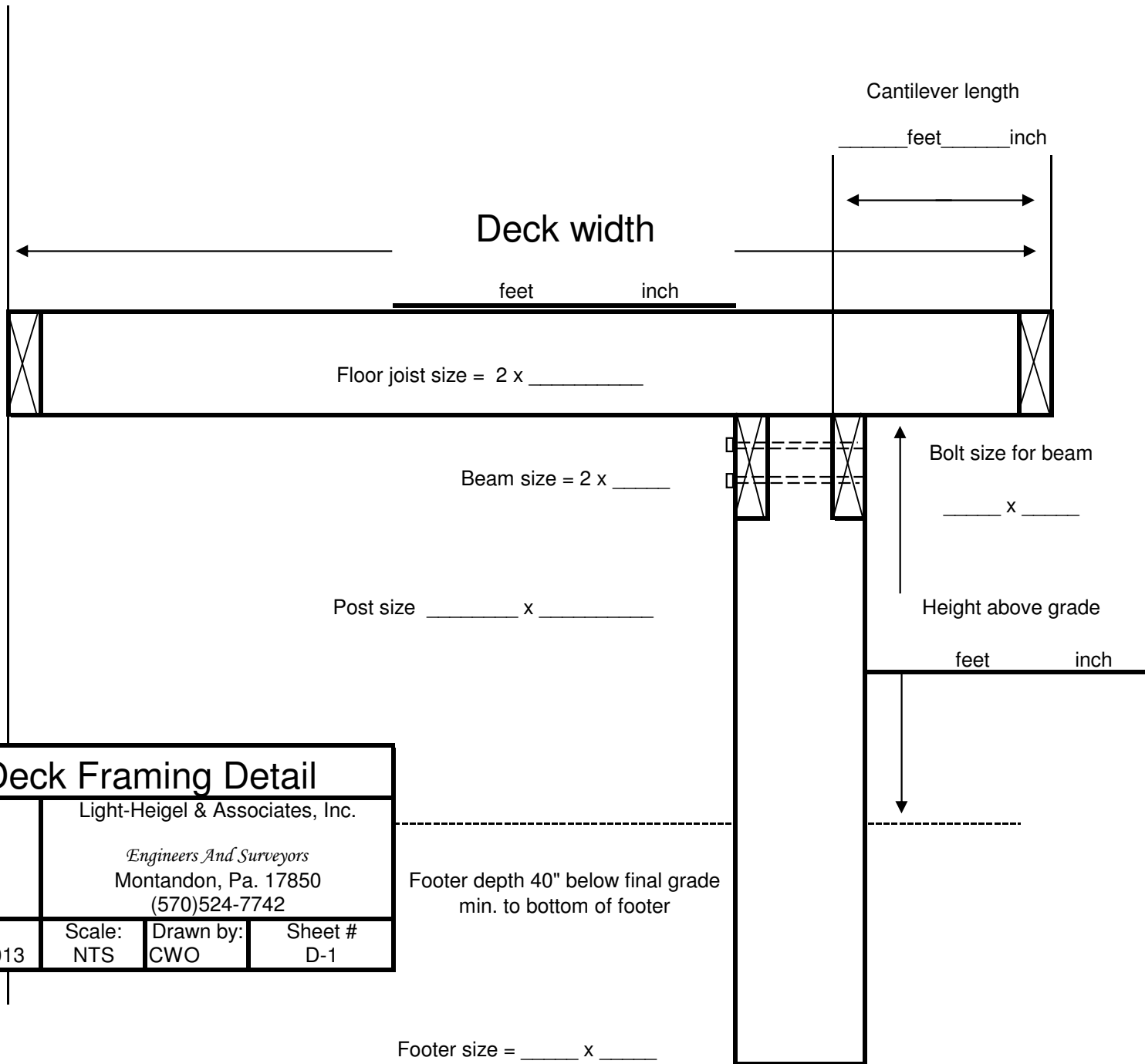
** NOT REQUIRED FOR INTERIOR DOOR

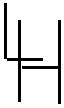


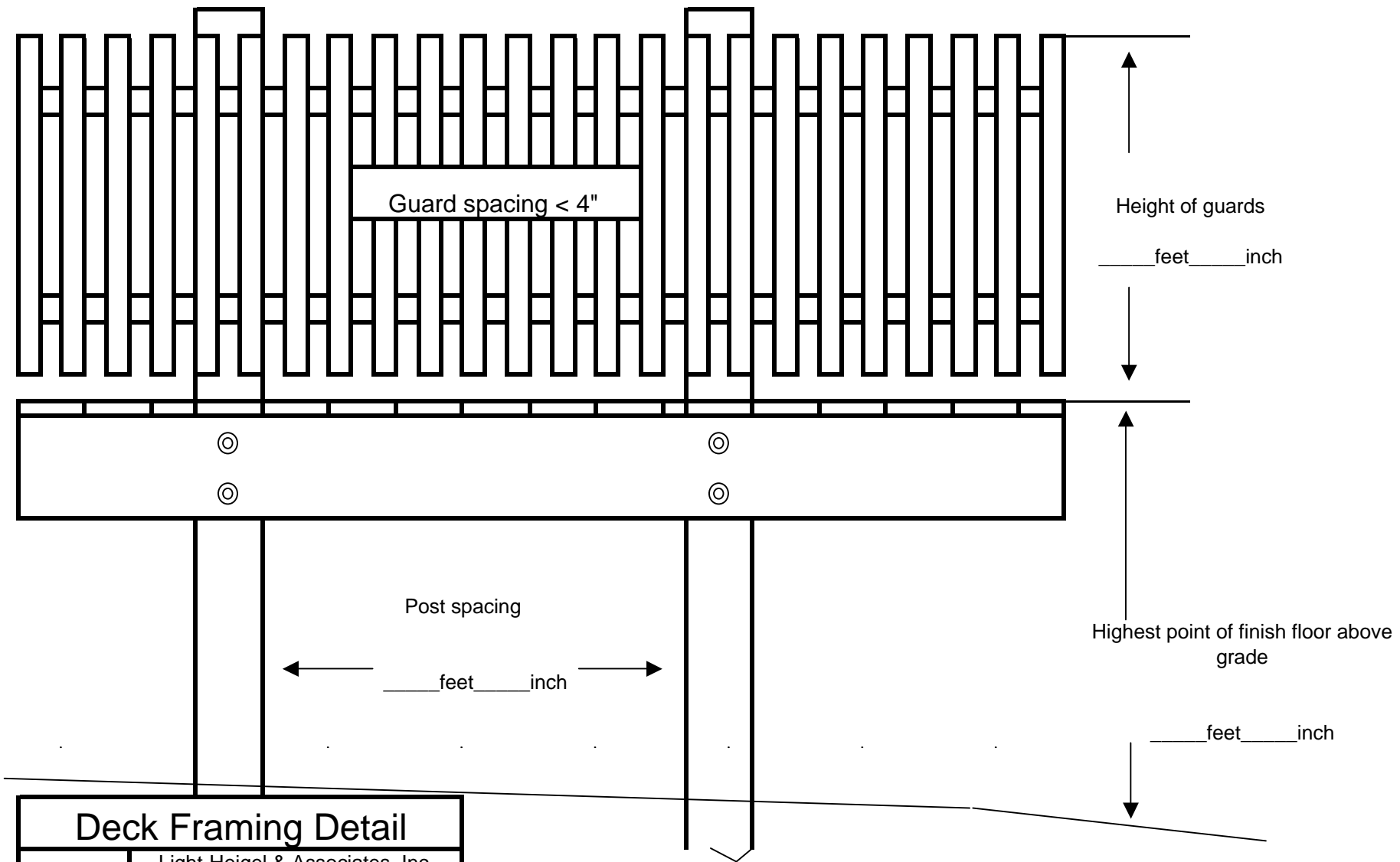
NOTES:

- 1.FIRE BARRIER AND INSULATION REQUIRED WHEN ATTACHED TO HOME BETWEEN LIVING SPACE AND GARAGE
- 2.NARROW WALL BRACING MAY BE REQUIRED IN WALLS
- 3.ATTIC VENTILATION AND ACCESS MAY BE REQUIRED

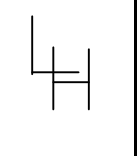
Garage Framing Detail			
44	Light-Heigel & Associates, Inc. Engineers And Surveyors P.O. Box 120 Montandon, Pa. 17850 (570)524-7742		
	Date; 11/12/2008	Scale: NTS	Drawn by: CWO
			Sheet # Lbg. D-1



Deck Framing Detail			
	Light-Heigel & Associates, Inc.		
	<i>Engineers And Surveyors</i> Montandon, Pa. 17850 (570)524-7742		
Date; 10/16/2013	Scale: NTS	Drawn by: CWO	Sheet # D-1



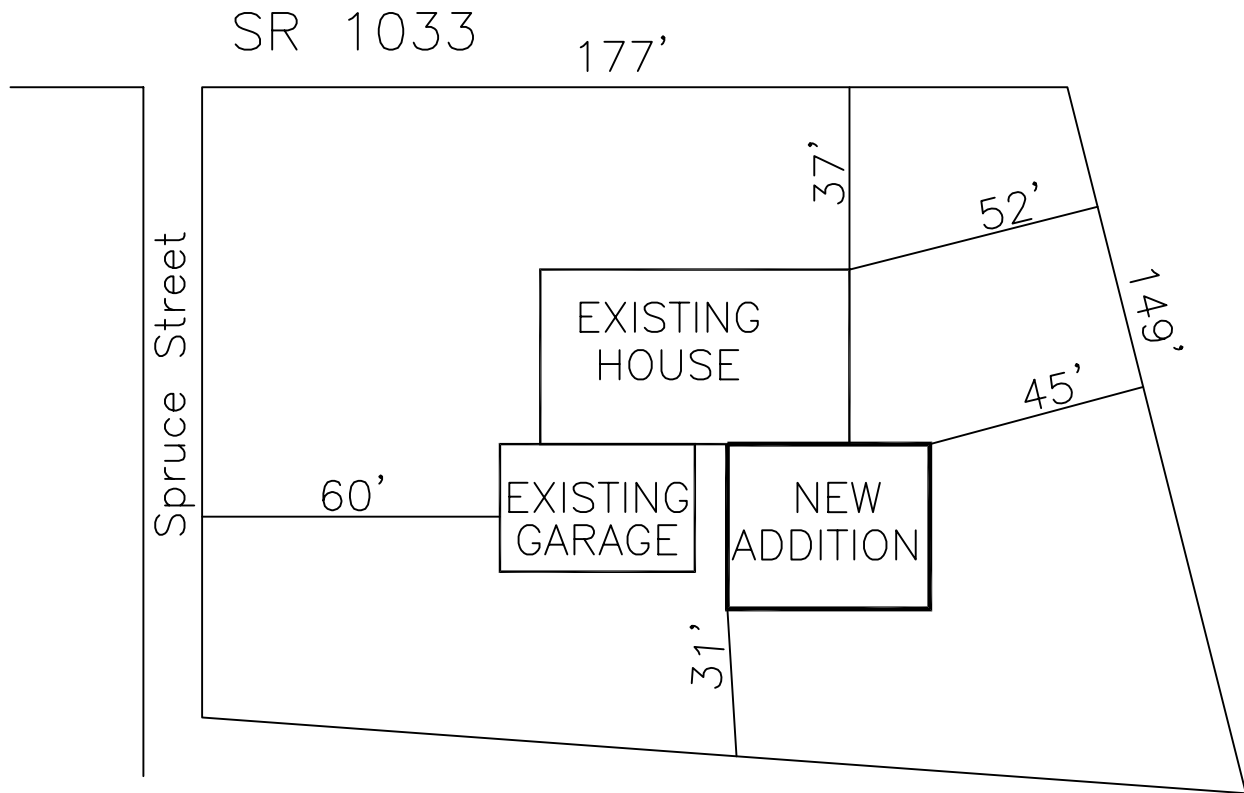
Deck Framing Detail



Light-Heigel & Associates, Inc.
 Engineers And Survey's
 P.O. Box 120
 Montandon, Pa. 17850
 (570)524-7742

Date: 4/18/2008	Scale NTS	Drawn By: CWO	Sheet # Lbg. D-2
--------------------	--------------	------------------	---------------------

SAMPLE SITE PLAN



SITE PLAN			
LIGHT-HEIGEL & ASSOCIATES, INC. ENGINEERS AND SURVEYORS PO BOX 120 MONTANDON, PA 17850 (570) 524-7742			
DATE: 2/2/05	SCALE: AS SHOWN	DRAWN BY: CKM	SHEET#: SK-6